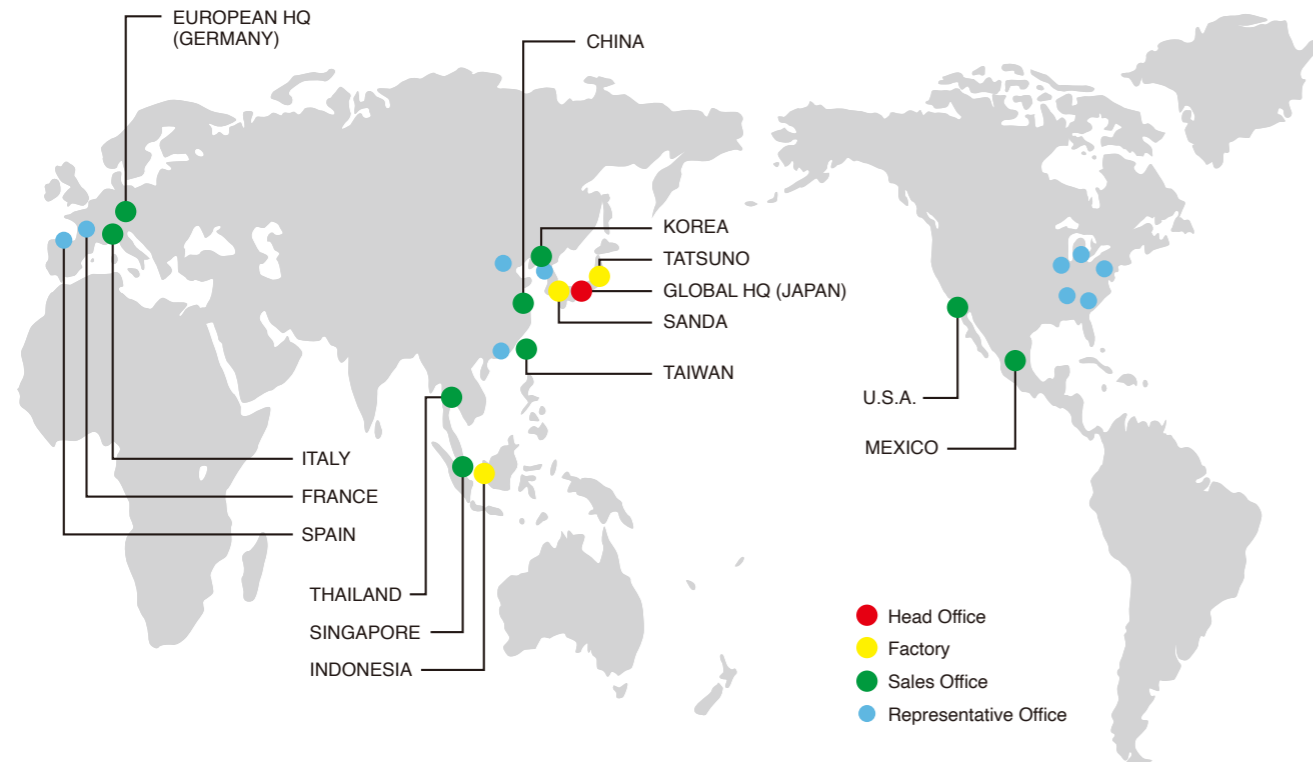


PATLITE Global Network



PATLITE Corporation

4-1-3, Kyutaromachi, Chuo-ku, Osaka 541-0056 Japan
International Sales Division
TEL.+81-6-7711-8953 FAX.+81-6-7711-8961 E-mail: overseas@patlite.co.jp

PATLITE (U.S.A.) Corporation

20130 S. Western Ave. Torrance, CA 90501, U.S.A.
TEL.+1-310-328-3222 FAX.+1-310-328-2676 E-mail: sales@patlite.com

PATLITE (SINGAPORE) PTE LTD

No.2 Leng Kee Road, #05-01 Thye Hong Centre, Singapore 159086
TEL.+65-6226-1111 FAX.+65-6324-1411 E-mail: sales@patlite.com.sg

PATLITE (CHINA) Corporation

Room 1102-1103, No.55, Lane 777, Guangzhong Road (West), Zhabei District, Shanghai, China 200072
TEL.+86-21-6630-8969 FAX.+86-21-6630-8938 E-mail: sales@patlite.cn

PATLITE Europe GmbH

Am Soeldnermoos 8, D-85399 Hallbergmoos, Germany
TEL.+49-811-9981-9770-0 FAX.+49-811-9981-9770-90 E-mail: info@patlite.eu

PATLITE KOREA CO., LTD.

A-2603, Daesung D-POLIS, 606, Seobusaet-gil, Geumcheon-gu, Seoul, 08504, Korea
TEL.+82-2-523-6636 FAX.+82-2-861-9919 E-mail: sales@patlite.co.kr

PATLITE TAIWAN CO., LTD.

2F-1, No.215, Sec. 2, Chengde Rd., Datong Dist., Taipei City 10364, Taiwan (R.O.C.)
TEL.+886-2-2555-1611 FAX.+886-2-2555-1621 E-mail: info@patlite.tw

PATLITE (THAILAND) CO., LTD.

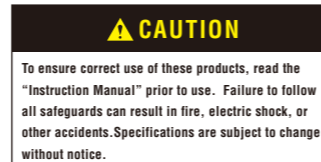
Olympia Thai Tower, 15th Floor 444 Ratchadapisek Road Samsenrok, Huay Kwang Bangkok 10310, Thailand
TEL.+66-2-541-5431 FAX.+66-2-541-5429 E-mail: sales_150716@patlite.co.th

PATLITE MEXICO S.A. de C.V.

Plaza de La Paz No. 102, int. 712 Guanajuato Puerto Interior, Silao, Gto, C.P.36275, Mexico
TEL.+52-472-748-9124 E-mail: ventas@patlite.com.mx

www.patlite.com

● PATLITE, the PATLITE logo are either registered trademarks or trademarks of PATLITE Corporation in JAPAN and/or other countries.
● The names of other companies and products are trademarks or registered trademarks of their respective companies.



O-AI05 EN 2209 C

Smarter Remote Monitoring and Control

Gather and analyze more data in real-time to make smarter, data-driven decisions



Effective Local Status Indication

Reliable visual and audible signals with a built-in counting feature

Visualize More Data Points

Equipped with 8 contact inputs enabling acquisition of up to 255 data codes

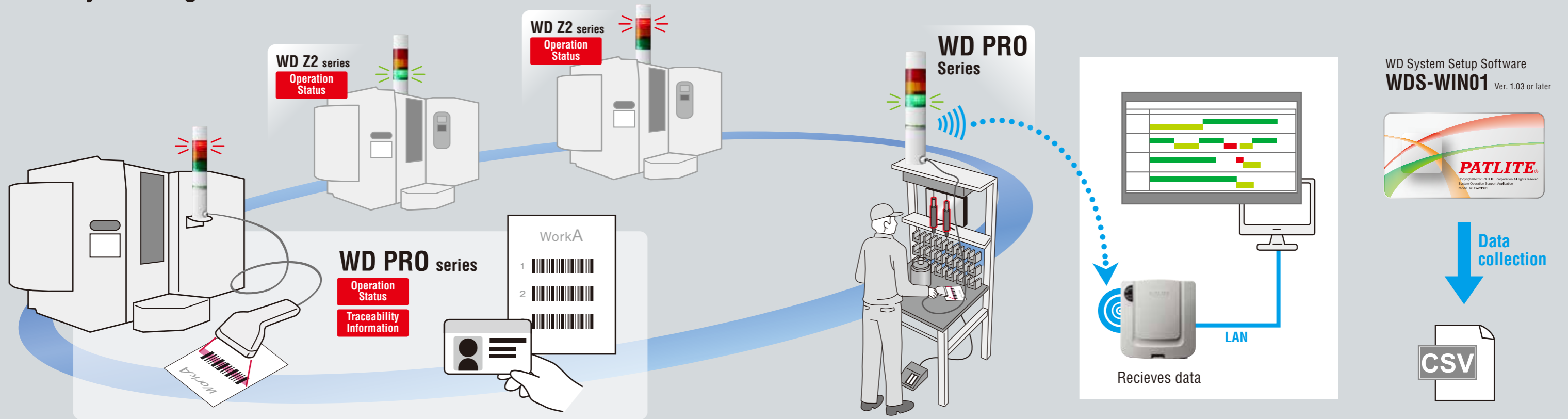
Acquire Additional Levels of Information

Features a serial communication interface to attach devices, such as a barcode reader

Improve Work Efficiency

Features 2-way wireless communication to remotely trigger tower light signals

The WD Pro adds a myriad of additional features to any existing WD Series network.



Wireless Data Acquisition System WD PRO series

**WD PRO Transmitter
WDT-6LR-Z2-PRO**

Compatible base unit
WD PRO series

Current consumption **MAX 110mA** (Total value of transmitter and base unit)

Radio wave reaching distance without obstacles
20m *3

*To be installed on the WDB-D80S-PRO base unit. (not compatible with the LR6 body unit)

**Contact Input -
Serial Communication Base Unit
WDB-D80S-PRO**

**Input
Serial base unit**

Transmitter
Transmitter for WD PRO

**WD PRO Transmitter
WDT-6LR-Z2-PRO**

Contact Input -
Serial Communication Base Unit
WDB-D80S-PRO

Wireless Data Acquisition System WD-Z2 series

Transmitter

Transmitter for LR6/LR5 *Not compatible with WD PRO Series

**Transmitter for
the LR6 signal light
WDT-6LR-Z2**

Compatible signal light model
LR6 series *1

Current consumption
MAX 55mA

Radio wave reaching distance without obstacles
20m *3

**Transmitter for
the LR5 signal light
WDT-5LR-Z2**

Compatible signal light model
LR5 series *1

Current consumption
MAX 55mA

Radio wave reaching distance without obstacles
20m *3

Receiving machine

Receiver WDR-LE-Z2

Recommended number of connected transmitters
20 Max. 30 *2

Connection method **LAN/USB**

Current consumption **typ. 65mA**

**Multiple receivers
can operate at the same time.** *4

*1: There are some restrictions on compatible signal lights, so please contact Patlite for details. *2: Due to the properties of radio waves, this number may differ according to the location of the receiver, the communication environment, and the communication frequency. *3: This is a reference value. The actual value may differ due to the properties of radio waves. *4: Multiple receivers cannot operate at the same time if a USB connection is used. (Contact Patlite for details.)

More Data Means Smarter Decision-Making

The WD PRO Series features 2-way wireless communication for better plant-wide visibility while enabling you to gather more data points for better predictive maintenance, quicker problem resolution, and OEE improvement.

Understand the cause of equipment shutdown

8 points of contact input

Up to 765 data codes can be acquired to identify exact cause and timing of equipment malfunctions.

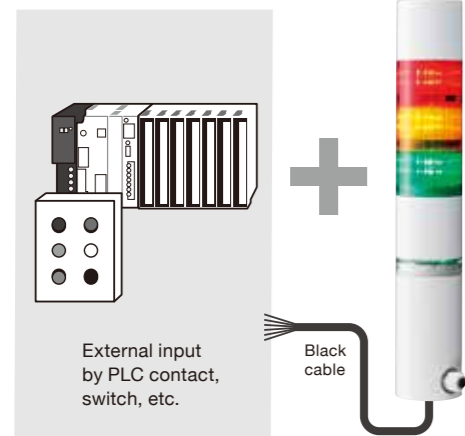
Error code table

Signal tower Information 3 points × External contact input 8 points → **765 factor data can be acquired**
*When using 3 segment signal tower

Decimal number	Contact input (ON - ● OFF - ○)							
	①	②	③	④	⑤	⑥	⑦	⑧
1	●	○	○	○	○	○	○	○
2	○	●	○	○	○	○	○	○
3	○	○	●	○	○	○	○	○
253	●	○	●	●	●	●	●	●
254	○	●	●	●	●	●	●	●
255	●	●	●	●	●	●	●	●

Equipment operation status × Detailed information → **Detailed data of equipment operation / non-operation**

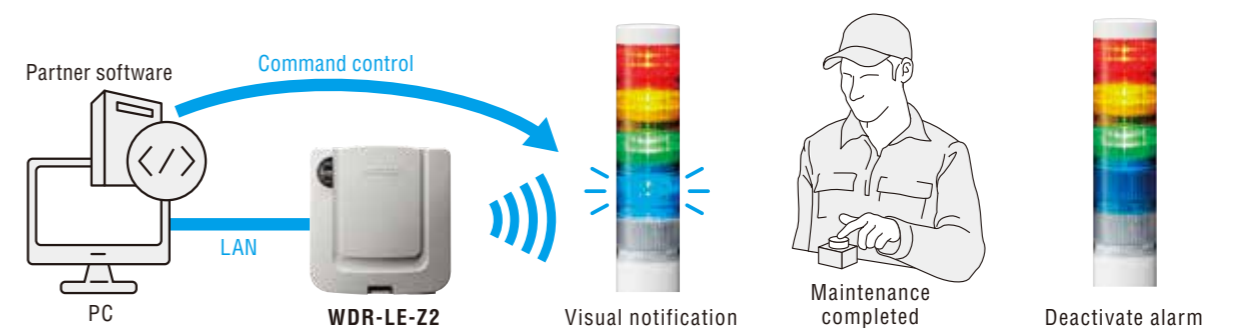
Cause-based Pareto analysis



Eliminate downtime

Remote Signaling

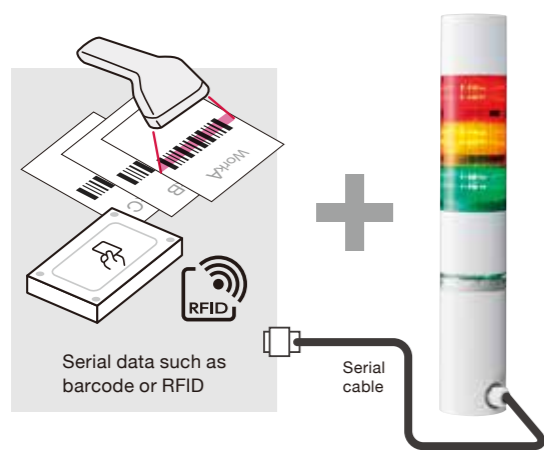
Notifies remote operators instantly of equipment abnormalities, as well as the type of maintenance required.



Acquire additional levels of information

Serial Cable

Connect a bar code reader to the WD PRO to trace employee data for greater control over products and process quality.



Worker ID input by barcode

20XX.00.00	SMITH	8	9	10	11	12	13	14	15	16	17	18	19	20
Unit 01 (total)														
Unit 01 (actual)	77340	78.43%	16560	4600										
Unit 01 (earned)														
Unit 02														

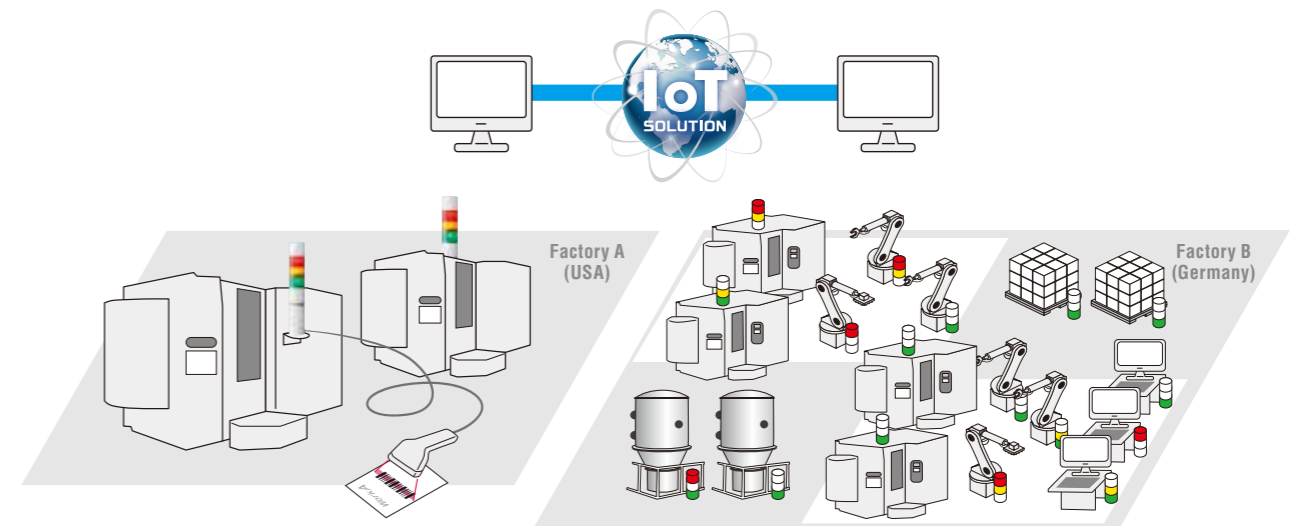
Legend: workA (dark blue), workB (medium blue), workC (light blue)

Equipment operation data by WD, Item number input by barcode, Production planning

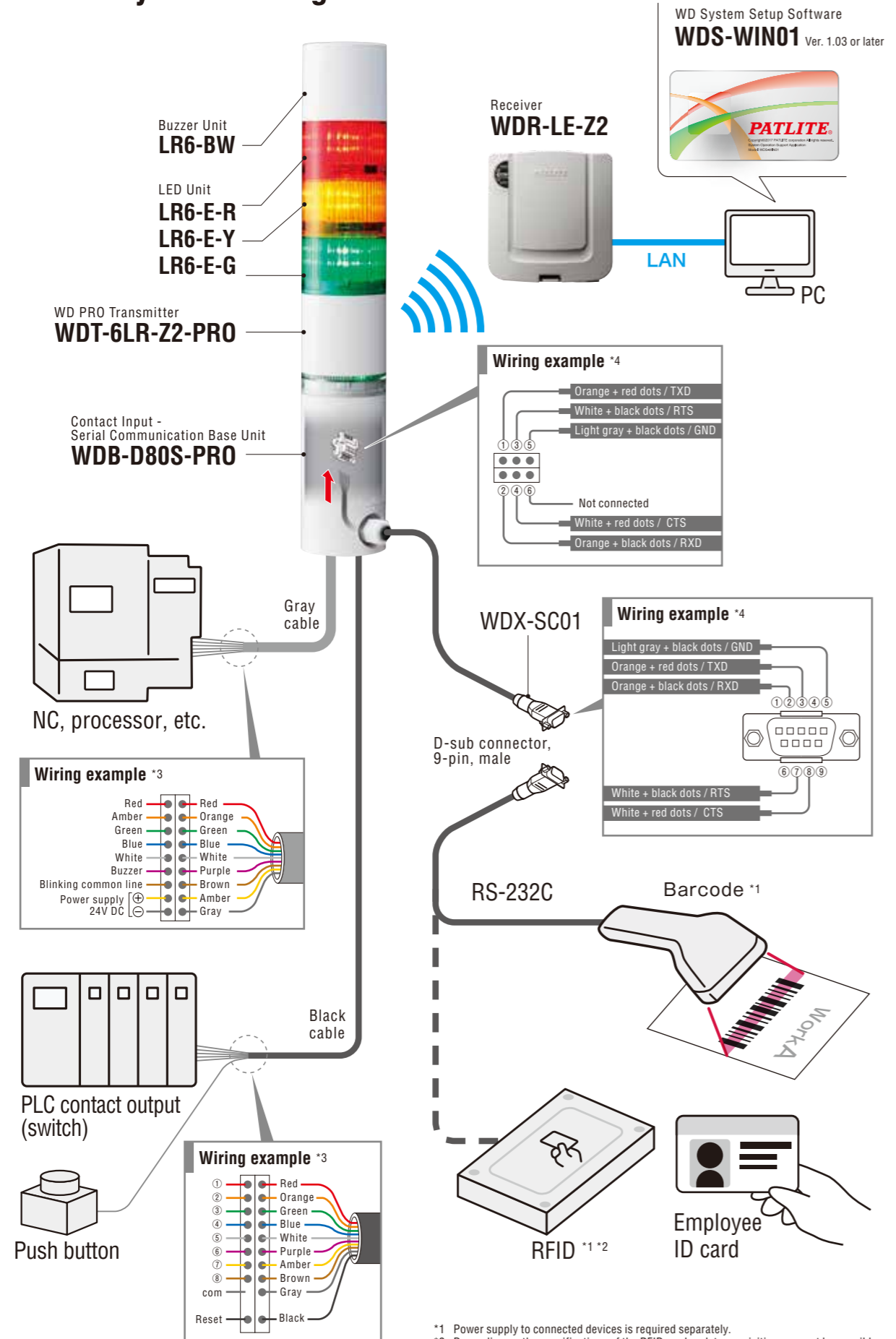
Monitor multiple facilities remotely and in real-time

Supported areas (as of November 2019)
 WD-Z2 : 41 countries
 WD PRO : USA, China, EU, Korea, Taiwan, Thailand, Indonesia, Mexico and Japan

Utilize compatible software to monitor multiple factories located across the globe.



WD PRO System Configuration



*1 Power supply to connected devices is required separately.
 *2 Depending on the specifications of the RFID reader, data acquisition may not be possible.
 *3 Please check the instruction manual for wiring instructions.
 *4 For pin assignment when using a serial cable, refer to its corresponding instructions manual.

WDS-WIN01 CSV Output Sample

Ver. 1.03 or later

Date Time	MAC address	user name	Red information	Amber information	Green information	WDT Surveillance intelligence	RS-232C data (ASCII code)	External input information (Decimal number)	Clear input information
2019/3/15 9:44	6CE4DAFFFE019925	machine 1	0	0	0	9		0	0
2019/3/15 9:44	6CE4DAFFFE019925	machine 1	0	0	1	9	012035 SMITH	0	0
2019/3/15 9:44	6CE4DAFFFE019925	machine 1	0	0	1	9	20190315 AANKBB 200pc	0	0
2019/3/15 9:52	6CE4DAFFFE019925	machine 1	1	0	0	9		0	0
2019/3/15 9:52	6CE4DAFFFE019925	machine 1	1	0	0	9		155	0
2019/3/15 10:15	6CE4DAFFFE019925	machine 1	0	0	1	9		0	0
2019/3/15 10:15	6CE4DAFFFE019925	machine 1	0	1	0	9		0	0
2019/3/15 10:20	6CE4DAFFFE019925	machine 1	0	1	0	9	MATERIAL SHORTAGE	0	0
2019/3/15 10:25	6CE4DAFFFE019925	machine 1	0	0	1	9		0	0
2019/3/15 11:05	6CE4DAFFFE019925	machine 1	0	1	0	9		0	0
2019/3/15 11:05	6CE4DAFFFE019925	machine 1	0	1	0	9	END	0	0
2019/3/15 11:06	6CE4DAFFFE019925	machine 1	0	0	0	9		0	0
2019/3/15 13:05	6CE4DAFFFE019925	machine 1	0	1	0	9	20190315 CCNKDD 300pc	0	0

Data sample

① Signal Tower information (6 inputs = Red, yellow, green, blue, white, buzzer)
 ② External configuration information (8 inputs = Binary 0 to 255)
 ③ Serial data (RS-232C = ASCII code) 2-10-16 can be selected by setting.
 ④ Reset input information

Specifications

Model code	WD PRO Transmitter WDT-6LR-Z2-PRO	Contact Input - Serial Communication Base Unit WDB-D80S-PRO
Rated Voltage	DC 24V	
Size	Φ60	
Protection Rating	IP65	
External Contact Input	—	Signal tower inputs (red, yellow, green, blue, white, buzzer); 8 external contact inputs; 1 reset input; serial communication input
Wireless specification	2.4GHz Zigbee	—
Corresponding receiver	WDR-LE-Z2	—

Options

- Serial Cable** WDX-SC01
- Buzzer Unit** LR6-BW
- Upper Bracket** SZP-004W
- Solid Color** LR6-E-R/Y/G/B/C
- Clear Globe** LR6-E-RZ/YZ/GZ/BZ
- Pole Bracket** SZ-016A
- Wall mount Bracket** SZK-003W
- Pole** POLE-800A21 800mm, POLE-300A21 300mm, POLE-100A21 100mm
- Other options:** SZ-010, SZK-001U